

The third issue of "That's so HSE" is dedicated to results of three surveys. The first survey explores factors of selecting a university: which factors affect students' choice of a university, why do students who are admitted to several universities choose HSE?

The second and central topic of this issue is postgraduate students at HSE. In January 2012 the Institutional Research Center conducted the first mass survey of postgraduate students with the goal of learning more about their life at the university and their work on doctorate research. The double-page spread is dedicated to a challenging path of entering into a doctorate program and working toward defending a dissertation.

The third topic is housing. In July IRC surveyed the university staff about their interest in participating in a housing association. Interested staff members shared information about their current living conditions. Having summarized responses we are able to describe how potential participants of the association live.

## Infographics:

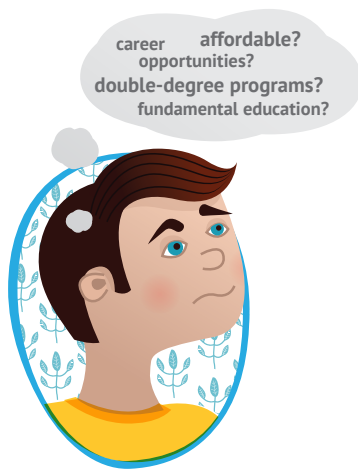
Factors for selecting a university

Postgraduate students at HSE

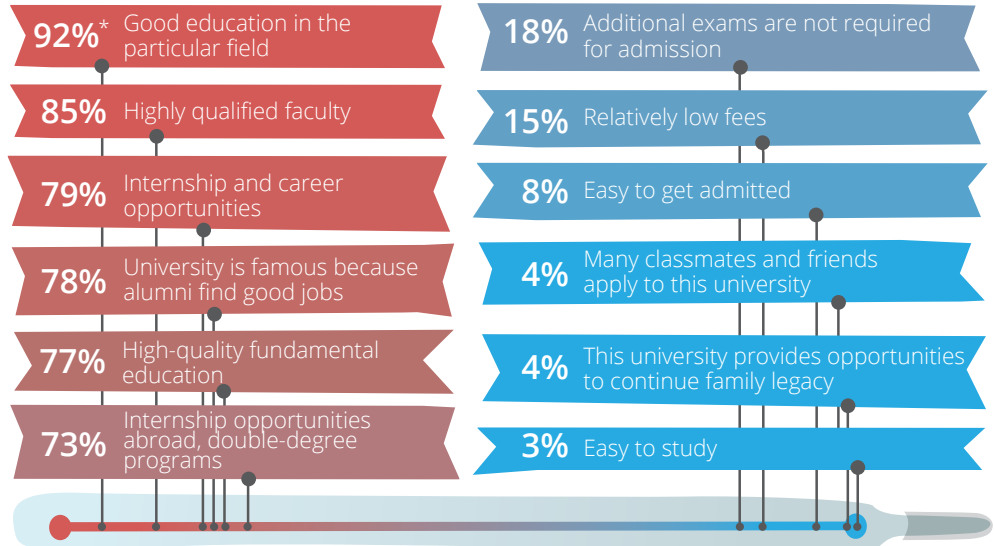
Potential housing association members

\*\*\*

Selecting a university is a very difficult task. Each year we try harder to understand what affects our prospective students. Results of latest surveys are shown on the image below. At first, we asked undergraduate students what characteristics and university image were important for them. Then we listed characteristics which are the strongest at HSE and make it the first choice university according to prospective students. Most popular and most unpopular answers are listed below.



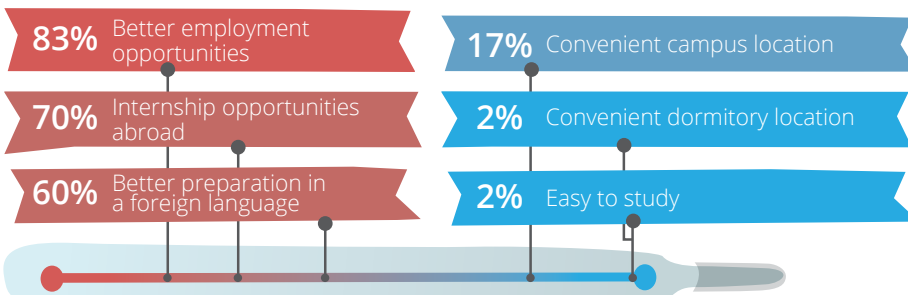
## What is important in selecting a university during the application process?



\* % undergraduate prospective students who think that a given characteristic is important

Source: online survey of prospective undergraduate students, 2012, N = 1567

## Why do students choose HSE upon admission to several universities?



\* % of prospective undergraduate students who listed this characteristic of HSE as the main reason for their decision.

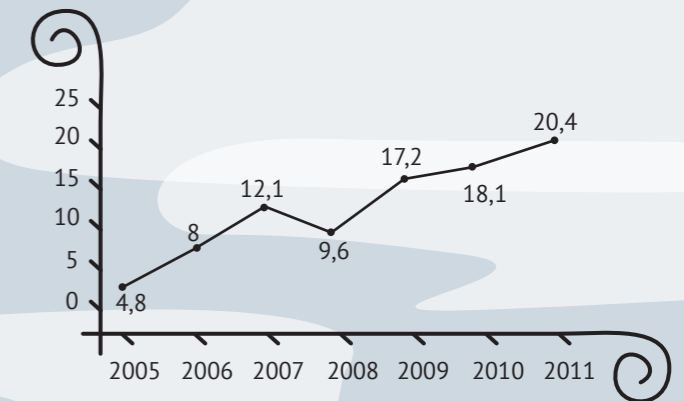
Source: online survey of prospective students, 2011, N=852, prospective students who were admitted on a scholarship to several universities and chose HSE

# Postgraduate Students

In January of this year IRC conducted a large-scale survey dedicated to an important part of academic life at HSE – postgraduate students. Survey results show the path from selecting a postgraduate program to defending a dissertation.

Source: online survey among full and part time postgraduate students at HSE Moscow, N=334. Timeline: January 2012.

Percentage of HSE PhD students who defended their PhD thesis in time\*, by year. University Statistics.



HSE statistics for the percentage of PhD students who defended their thesis in time is close to Russia-wide average statistics (25%). A similar indicator – about a quarter of students defending on time – typical for European postgraduate programs.

\* The number of postgraduate defenses during or a year after a postgraduate program to the number of students admitted to a postgraduate program three years (full-time students) or four years ago (part-time students). Source: statistical data of HSE.

## How confident are you in completing the dissertation?

	Before finishing a PhD program	A year after finishing a PhD program
Confident	75%	92%
Not confident	25%	8%

## Which industry would you choose for employment? <sup>7</sup>

	Aren't employed	Employed by HSE	Employed outside of HSE
Academia	43%	73%	20%
Business (as an employee)	10%	12%	32%
Business (as an entrepreneur)	16%	0%	20%
Nonprofit and political organizations	15%	4%	7%
Other	16%	11%	21%

## How much does your current job related with the topic of a dissertation? <sup>6</sup>

Job is closely related with the topic of a dissertation:
23% of postgraduate students who are employed outside of HSE
42% of postgraduate students who are employed by HSE

85% are employed

- 57% employed outside of HSE
- 20% employed by HSE
- 8% employed by both HSE and an outside company

51% are involved in teaching

- 30% teaching internship
- 13% teaching assistant
- 8% faculty member

58% are involved in the work of research departments at HSE

- 20% full-time employees
- 10% participate in projects but aren't HSE employees
- 28% attend seminars and other research-related events

## Why postgraduate program at HSE? <sup>1</sup>

- 59% Highly qualified faculty
- 58% Preferred dissertation advisor works at the university
- 43% Opportunities for postgraduate students at HSE
- 52% Status and prestige of the university

## How do transfer students meet their academic advisor? <sup>2</sup>

- 32% Received information about a possible advisor from a department
- 22% Found information on hse.ru and contacted via e-mail
- 13% Friends at HSE recommended an academic advisor
- 12% Met at a conference or another academic event

## When is agreement with an academic advisor reached? <sup>3</sup>

	Studied at HSE earlier	Did not study at HSE earlier
Before application	88%	56%
After application	9%	17%
During postgraduate studies	3%	27%

## Which details of a future dissertation are discussed with an academic advisor before admission? <sup>4</sup>

- 9% Detailed research plan, possible publications, etc.
- 24% Have not discussed a dissertation
- 43% Only the topic of a future dissertation
- 24% Topic, structure and approximate content of a dissertation

## How often do students meet with an academic advisor? <sup>4</sup>

	Work at HSE	Work outside of HSE
Once a week or more	35%	9%
2-3 times a week	21%	19%
Once a month	21%	28%
Less than once a month	23%	44%

## How satisfied are students with English language courses? <sup>5</sup>

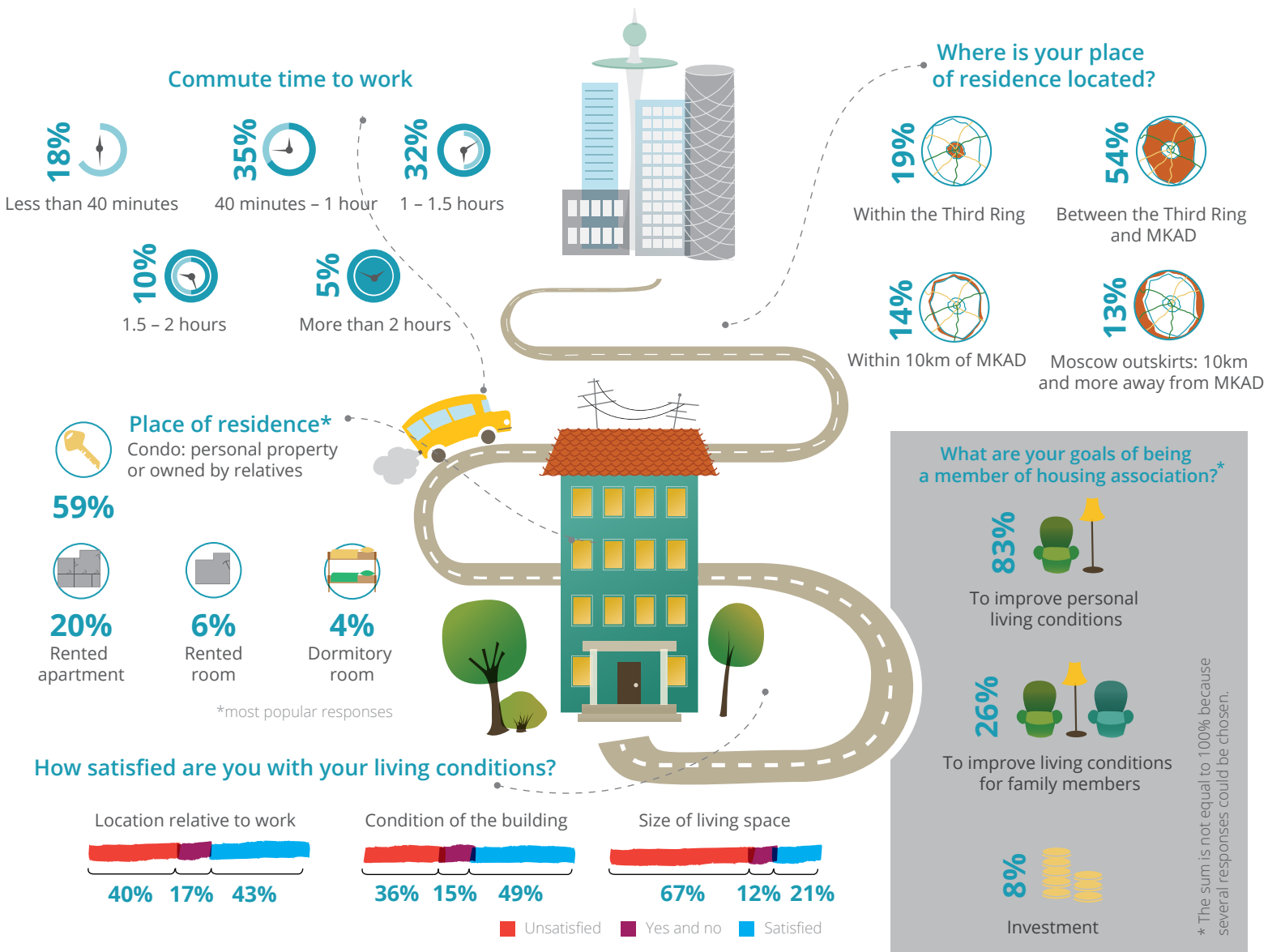
- 25% are dissatisfied with English language courses
- Feedback:
  - Course for the sake of a course, does not give new knowledge
  - Study groups are not divided by skill level
  - Unprofessional, old-fashioned approach
  - Ineffective assignments, outdated materials

1 – four most popular reasons are listed. 2 – N of postgraduate students who have not studied at HSE earlier = 155; most popular responses are listed. 3 – N of respondents who studied at HSE earlier = 179, N of respondents who have not studied at HSE earlier = 155. 4 – N employed by HSE = 70, N employed outside of HSE = 215.

5 – N = 298, postgraduate students who attended one or more class at the time of survey. 6 – a connection between work and a dissertation topic is evaluated at 6 or 7 on a 7-point scale. 7 – N unemployed = 49, N employed by HSE = 70, N employed outside of HSE = 215.

# Potential Housing Association Participants

As you might already know HSE made a decision to create and support a housing association. It is designed to help the university's employees solve their housing problems. In July 2012 IRC conducted a survey among HSE employees<sup>1</sup> to gauge their interest in creating a housing association. Respondents who expressed interest in the association were also asked to elaborate on their current living conditions. As a result, picture below shows where and how potential members of the association live.



## Mem of the Month



Source: community Vkontakte  
[http://vk.com/hse\\_mem](http://vk.com/hse_mem)

## Figure of the Month



Average maximum time which students who live in Dubki dormitory spend commuting from their dormitory to campus<sup>2</sup>

Sources: 1 – online survey of HSE staff in Moscow, including MUEM (faculty, research staff, management staff, support staff, campus staff). N of employees interested in the association = 1030; June-July 2012.  
2 – online survey of students living in Dubki dormitory; N = 665, November 2011.



HSE Institutional Research Center  
Editors: Maria Pravdina, Daria Drozhzhina  
Design: Daria Karpenko

E-mail: [cim@hse.ru](mailto:cim@hse.ru)  
Phone: 775-9590 (1802)  
November 28, 2012