

THAT'S SO HSE

December 2012
Issue 4

HSE Institutional Research Center Newsletter

Dear colleagues! We would like to summarize year 2012. This year was interesting and full of various events therefore we decided to dedicate the spread to each month of 2012, covering interesting research data from the Institutional Research Centre and university statistics. We are grateful to our respondents – prospective students, HSE undergraduate and graduate students, alumni, faculty, and administrative staff – for actively sharing their opinion and offering feedback and ideas for the development of HSE. We will try to do our best to ensure that all voices are heard.

We wish you to utilize resources at HSE to the maximum, to discover and to be active in expressing your interests at the university! We also join our respondents who sent good wishes to HSE through surveys. Some of these wishes decorated this Christmas tree below.

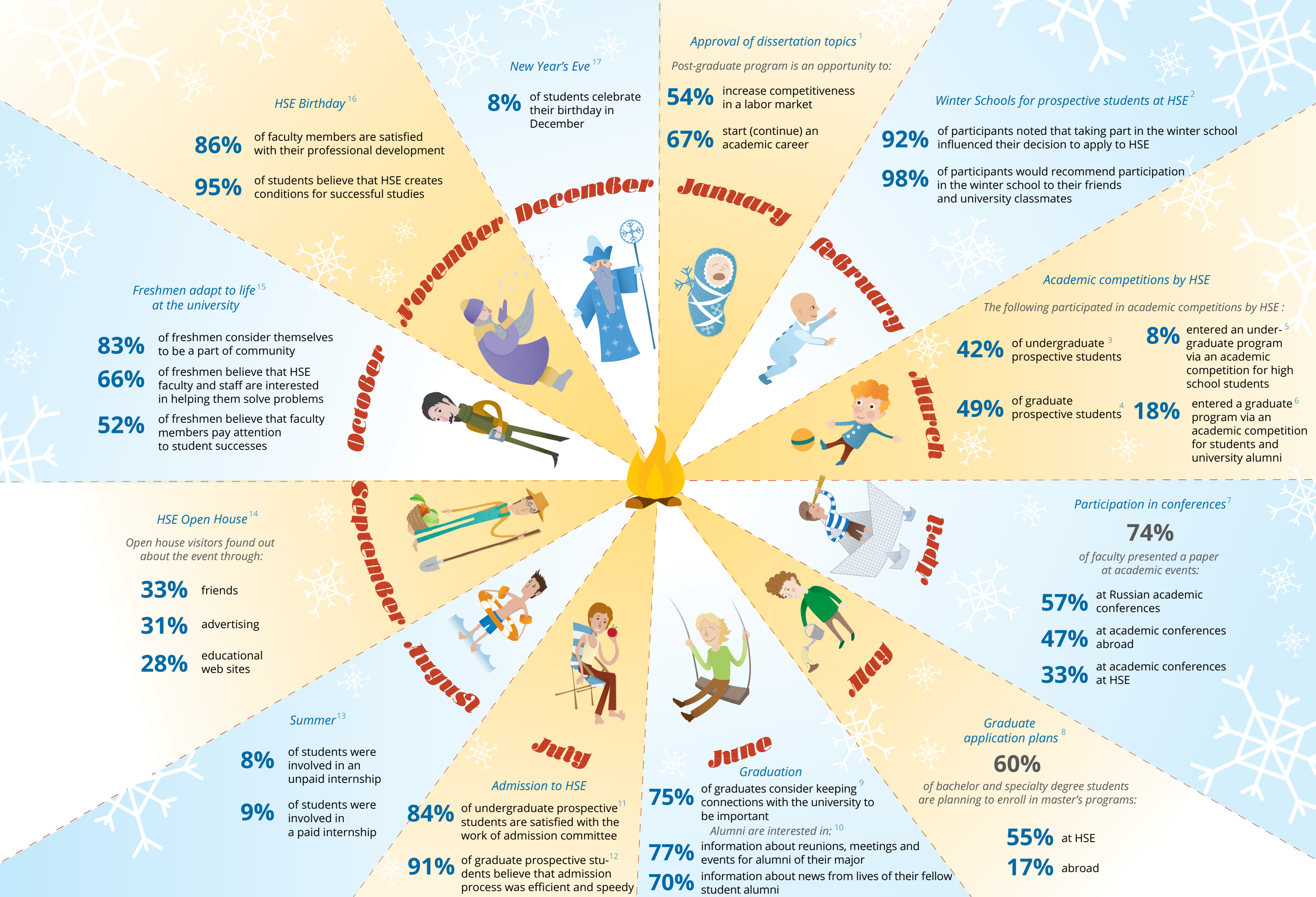
Infographics:

New Year wishes

12 months of 2012

HSE on vacation



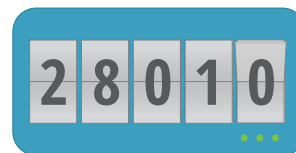


Sources: 1 – e-survey among full-time and part-time post-graduate students in HSE Moscow, January 2012, N=334; 2 – survey of HSE Winter School participants 2012, N=388; 3 – monitoring of prospective undergraduate students, 2012, N=7613; 4 – monitoring of prospective graduate students, 2012, N=2415; 5 – HSE statistical data; 6 – HSE statistical data; 7 – N of respondents who answered = 724, monitoring of faculty life, 2012 (multiple answers); 8 – N of respondents who answered the question = 326, monitoring of student life (multiple answers); 9 – N of respondents who answered the question = 400, monitoring of alumni, 2012; 10 – N of respondents who answered the question = 541, monitoring of alumni, 2012; 11 – e-survey of undergraduate prospective students, July 2012, N=1567; 12 – e-survey of graduate prospective students, July 2012, N=896; 13 – N of respondents who answered the question = 2185, monitoring of student life, fall 2012; 14 – a report on results of undergraduate open house, March 2012, N=576; 15 – N of respondents who answered the question = 984, monitoring of student life, fall 2012; 16 – monitoring of student life, fall 2012, N=3423; 17 – HSE statistical data.

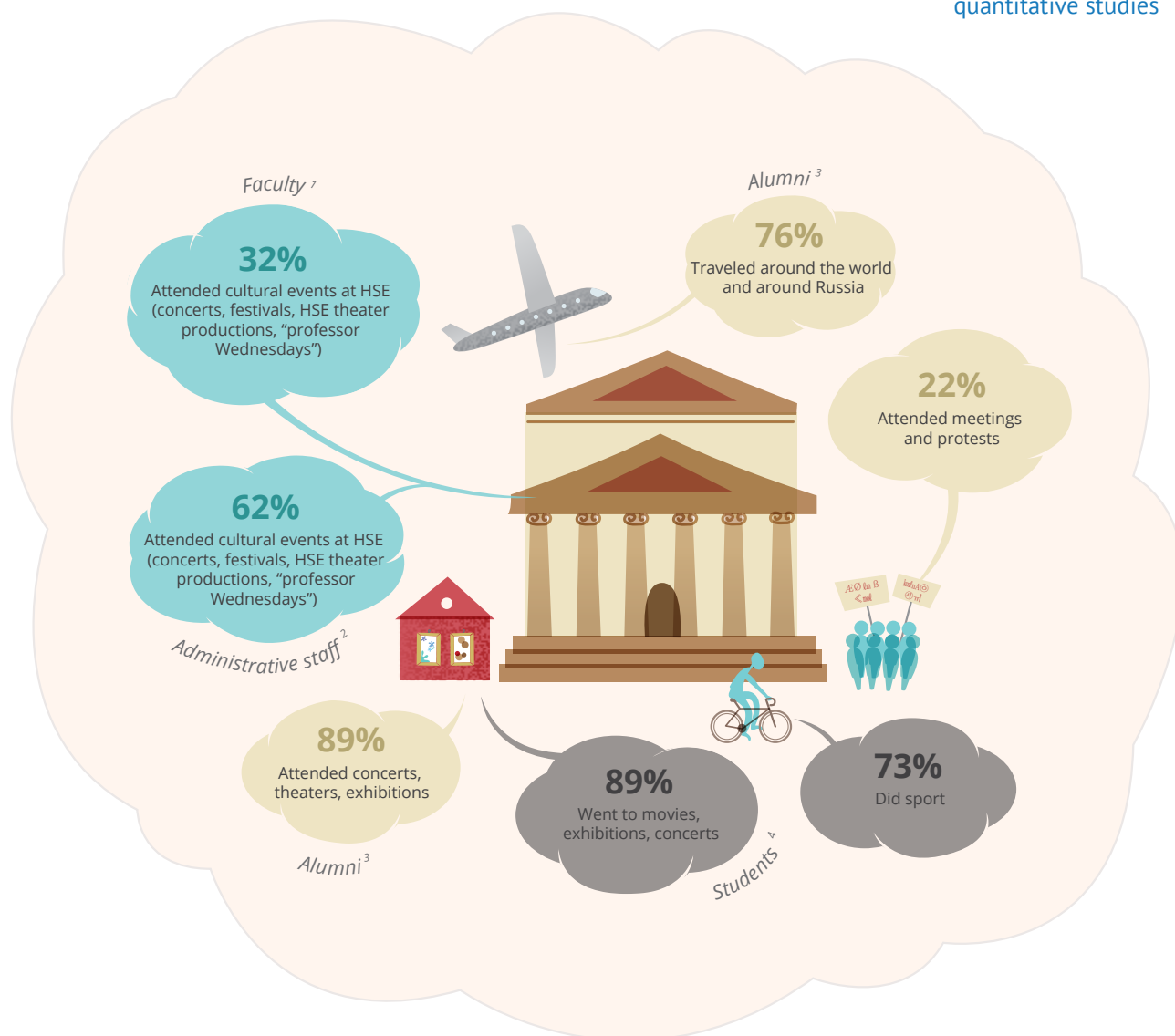
HSE on vacation

HSE community is not only capable of studying and working hard but also of resting well. This is seen in results of monitoring survey from 2012. We are presenting a picture of how HSE community members spent their free time.

Figure of the Month



people were surveyed by IRC for quantitative studies



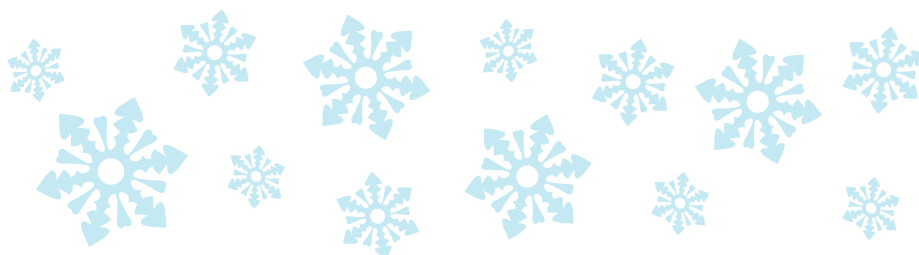
Meme of the month

The scariest time of the day



Source: community Vkontakte
http://vk.com/hse_mem

Sources: 1 – monitoring of faculty life 2012, N=682; 2 – monitoring of administrative staff 2012, N=238; 3 – monitoring of alumni 2012, N=541; 4 – monitoring of student life, fall 2012, N=3423.



HSE Institutional Research Center
 Editors: Maria Pravdina, Daria Drozhzhina
 Design: Daria Karpenko

E-mail: cim@hse.ru
 Phone: 775-9590 (1802)
 December 28, 2012